



IC13

Installation Instructions – Mount Up! Single Gun Vertical (500051)

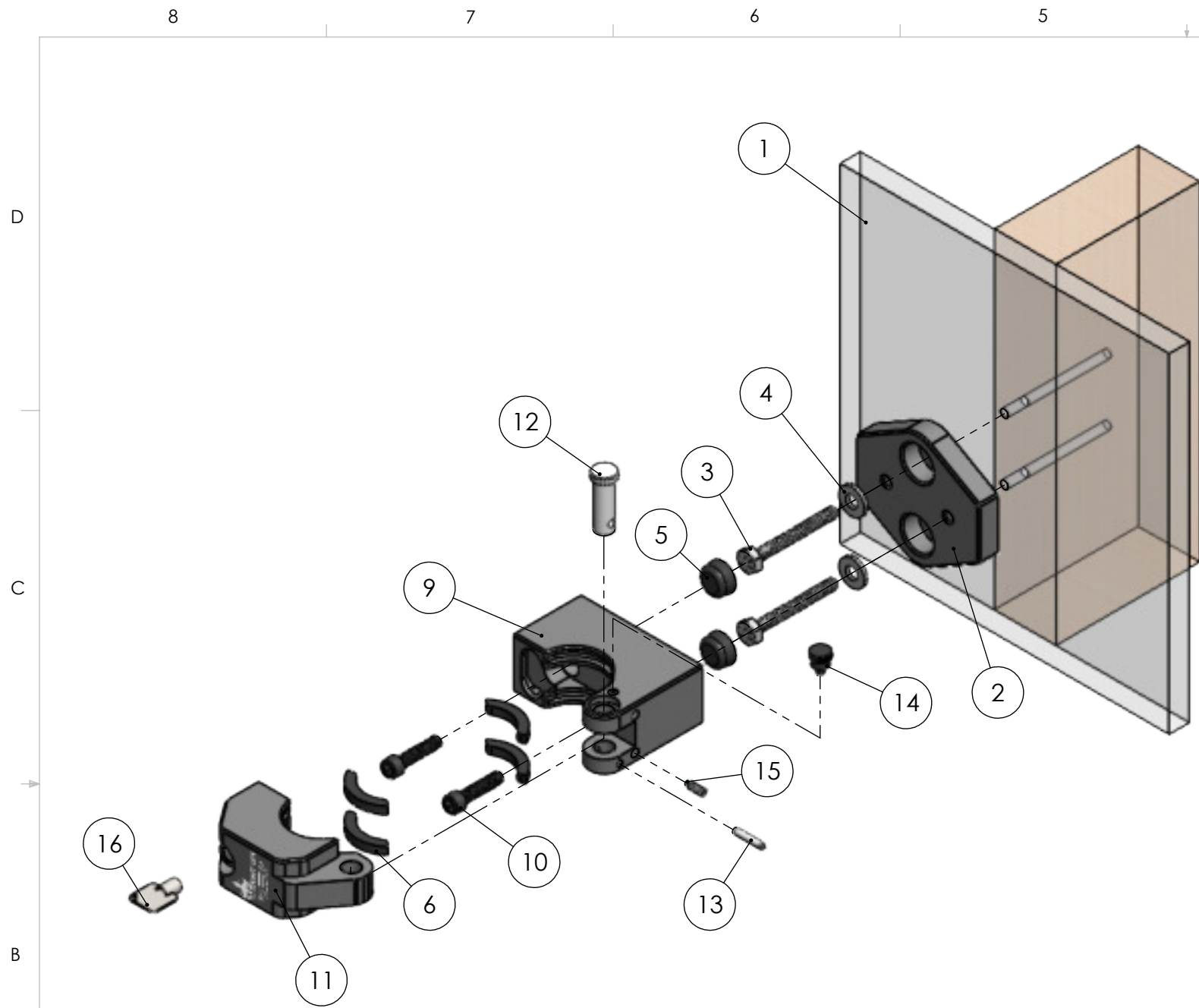
1. Unpack the contents of your package and remove the red clevis pin retaining sticker on the right-hand side of your bracket(s). Break your bracket(s) down into three pieces for installation (item #'s 9, 11, and 12).
2. Locate the wood stud where you want to mount your bracket. Brackets can also be installed into block or concrete walls with appropriate anchors (not included).
3. Mark either the top or bottom hole location of the mounting plate (#2) on the wall.
4. Drill a 3/16" pilot hole at this location, into the stud, **AT LEAST 2-1/2" DEEP into the stud.**
5. Screw the lag bolt (#3) with washer (#4) into the stud using a 7/16" socket and ratchet. Secure, but do not over-tighten.
6. Place your bubble level against one of the flat sides of the mounting plate (item #2) and mark the location for the second hole.
7. Repeat steps 4 and 5 to mount the plate on the wall.
8. Cover the lag bolt heads with the black covers (#5)
9. Choose the four "bumpers" (#'s 6-8) that you need for your firearm using the guide above. Press them into the grooves on the inside of the rear block (#9), and the front block assembly (#11).
10. Using a 3/16" allen key or driver, mount the rear block (#9) to the mounting plate (#2) using the 1/4"-20 socket head cap screws (#10). The rear block can be oriented so that the release button on the left or right, depending on user preference.
11. Align the holes in the rear block (#9) and the front block assembly (#11) and insert the clevis pin (#12) to join the parts. **THE HOLE IN THE CLEVIS PIN MUST BE ALIGNED WITH THE HOLE IN THE REAR BLOCK.**
12. Use a small hammer or mallet to pin the clevis pin (#12) in place, using the 1/8" spring pin (#13). Use a pin punch (if available) or the second included spring pin (#13) to tap the spring pin slightly past flush.
13. Screw the nylon thumb screw (#14) into place on the top of the rear block (#9). The angle on your buffer tube will rest against this post, preventing any damage to your weapon or bracket while in use.
14. (OPTIONAL) Screw the nylon tipped setscrew (#15) into the rear block (#9) on the side opposite of the red button, **ON THE BOTTOM** of the clamp assembly. Use this setscrew to achieve perfect vertical alignment of your firearm when in the bracket (some firearms may hang crooked depending on setup. Use this screw to counter act this effect).
15. Unlock your bracket with the key. Open the bracket by depressing the red button and place your firearm into the bracket. Close the bracket and ensure that the red release button has engaged. The bracket clamps on the buffer tube between the castle nut, and the angled portion of the tube.
16. **TO LOCK YOUR BRACKET, REMOVE THE KEY (IF PRESENT), AND PRESS THE PLUNGER INTO THE LOCK. DOUBLE CHECK THAT THE PLUNGER REMAINS IN POSITION, AND CHECK FOR PROPER LOCK BY ATTEMPTING THE DEPRESS THE RED BUTTON.**

Bumper Selection Guide



For additional assistance, contact us at info@ic13.us or 888-993-4213.

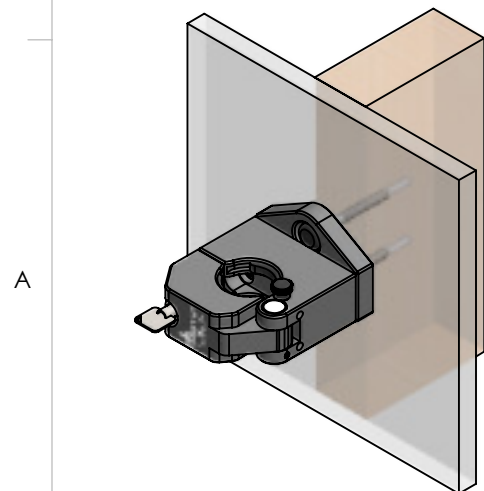




ITEM NO.	PART NUMBER	DESCRIPTION	QTY.
1	Wall with Single Stud	Supplied by you	1
2	100081	Plate, Mounting, Vertical Stud Mount	1
3	100070	Lag Bolt, 1/4 x 2-1/2"	2
4	100071	Washer, Flat, 1/4"	2
5	100082	Cover, Lag Bolt, Black	2
6	100053	Bumper, Rubber, Mil-Spec	4
7	100054	Bumper, Rubber, Commercial (Not Shown)	4
8	100055	Bumper, Rubber, Pistol (Not Shown)	4
9	100050-03	Rear Block, Buffer Tube Clamp	1
10	100072	Cap Screw, Allen Head, 1/4-20 x 1"	2
11	100090	Front Buffer Clamp Assembly	1
12	100073	Clevis Pin, Steel, 3/8 x 1-1/8"	1
13	100074	Spring Pin, 1/8 x 11/16" Long	1
14	100075	Thumb Screw, Nylon, 8-32 x 3/16"	1
15	100076	Set Screw, Nylon Tipped, 8-32 x 3/8" Long	1
16	100062	Key Set, Tubular	1

WARNING: NEVER USE THIS DEVICE WITH A WEAPON THAT HAS A LOADED CHAMBER OR LOADED MAGAZINE INSERTED. ALWAYS VISUALLY INSPECT FOR CLEAR CHAMBER PRIOR TO USING THE DEVICE.

For installation instructions visit <https://ic13.us/productsupport/>



IC13

PROPRIETARY AND CONFIDENTIAL
 THE INFORMATION CONTAINED IN THIS DRAWING IS THE SOLE PROPERTY OF IC13 ARMS AND ACCESSORIES (IC13). ANY REPRODUCTION IN PART OR AS A WHOLE WITHOUT THE WRITTEN PERMISSION OF IC13 IS PROHIBITED.

		UNLESS OTHERWISE SPECIFIED:		NAME	DATE	IC13	
		DIMENSIONS ARE IN INCHES TOLERANCES: FRACTIONAL ±.015" ANGULAR: MACH ±.5 Deg BEND ±.5 Deg TWO PLACE DECIMAL ±.010" THREE PLACE DECIMAL ±.005"		DRAWN			
		INTERPRET GEOMETRIC TOLERANCING PER:		CHECKED		SIZE DWG. NO. REV	
		MATERIAL		ENG APPR.		B 500051-03	
NEXT ASSY		USED ON		MFG APPR.		SCALE: 1:2.5 WEIGHT: 3.75 SHEET 1 OF 1	
APPLICATION		DO NOT SCALE DRAWING		Q.A.			
				COMMENTS:			